

THIS INSTRUMENT PREPARED BY
 DAVID P. LINDLEY
 OF
CAULFIELD and WHEELER, INC.
 SURVEYORS - ENGINEERS - PLANNERS
 7900 GLADES ROAD, SUITE 100
 BOCA RATON, FLORIDA 33434 - (561)392-1991

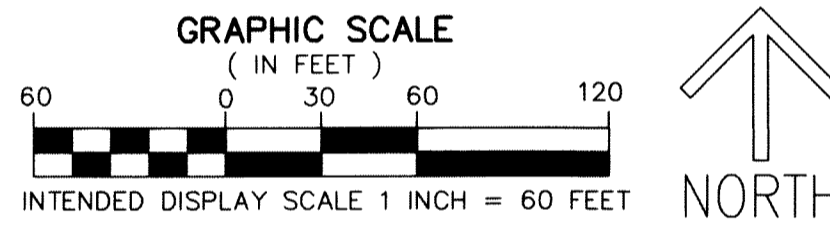
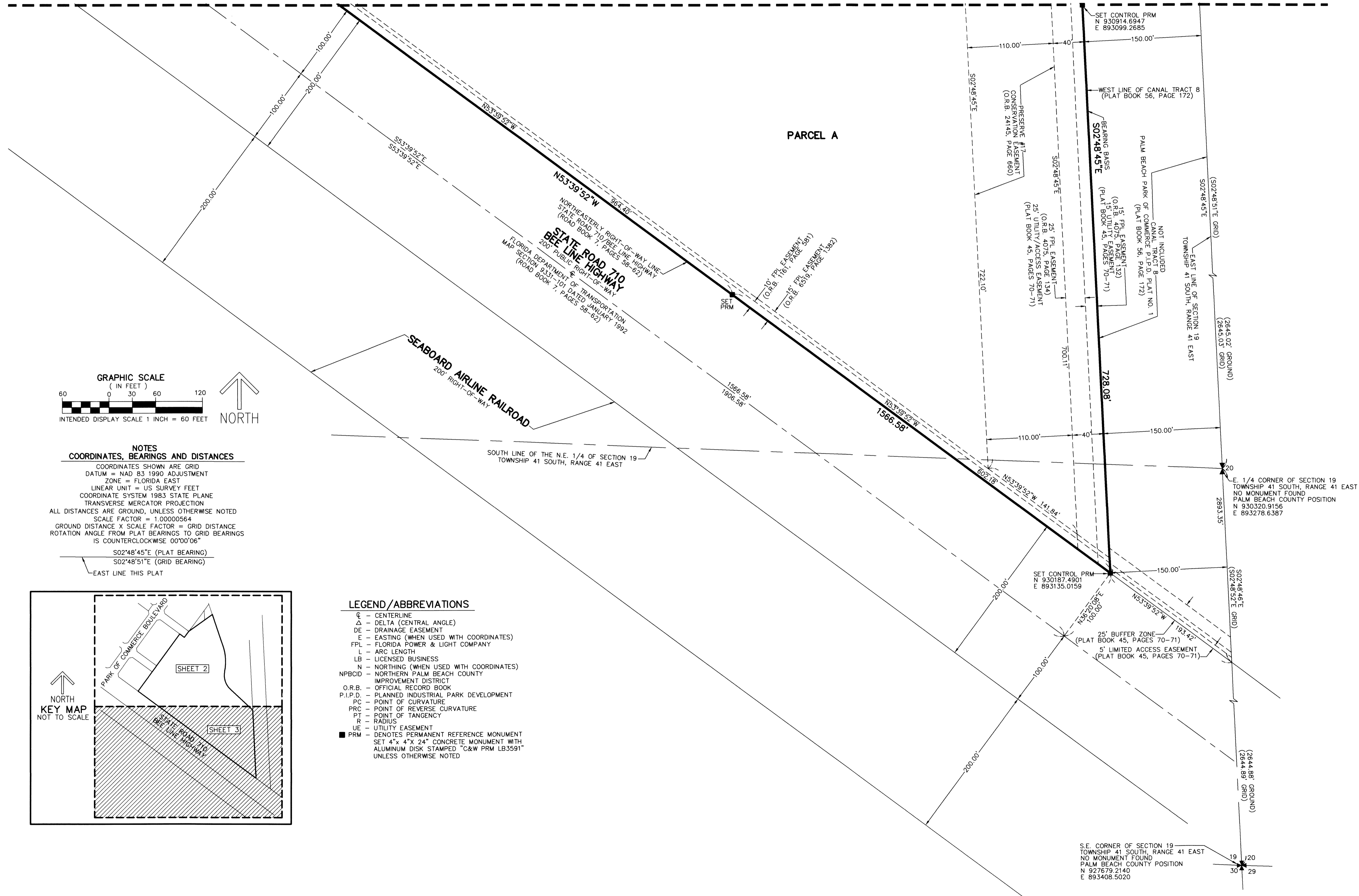
PALM BEACH PARK OF COMMERCE, P.I.P.D. - PLAT 23

BEING A REPLAT OF A PORTION OF CALBUT GENPAR TRACT A,
 AS RECORDED IN PLAT BOOK 45, PAGES 70 AND 71 OF THE PUBLIC RECORDS OF PALM BEACH COUNTY, FLORIDA,
 TOGETHER WITH A PORTION OF SECTION 19, TOWNSHIP 41 SOUTH, RANGE 41 EAST,
 LYING IN SECTION 19, TOWNSHIP 41 SOUTH, RANGE 41 EAST, PALM BEACH COUNTY, FLORIDA.

67

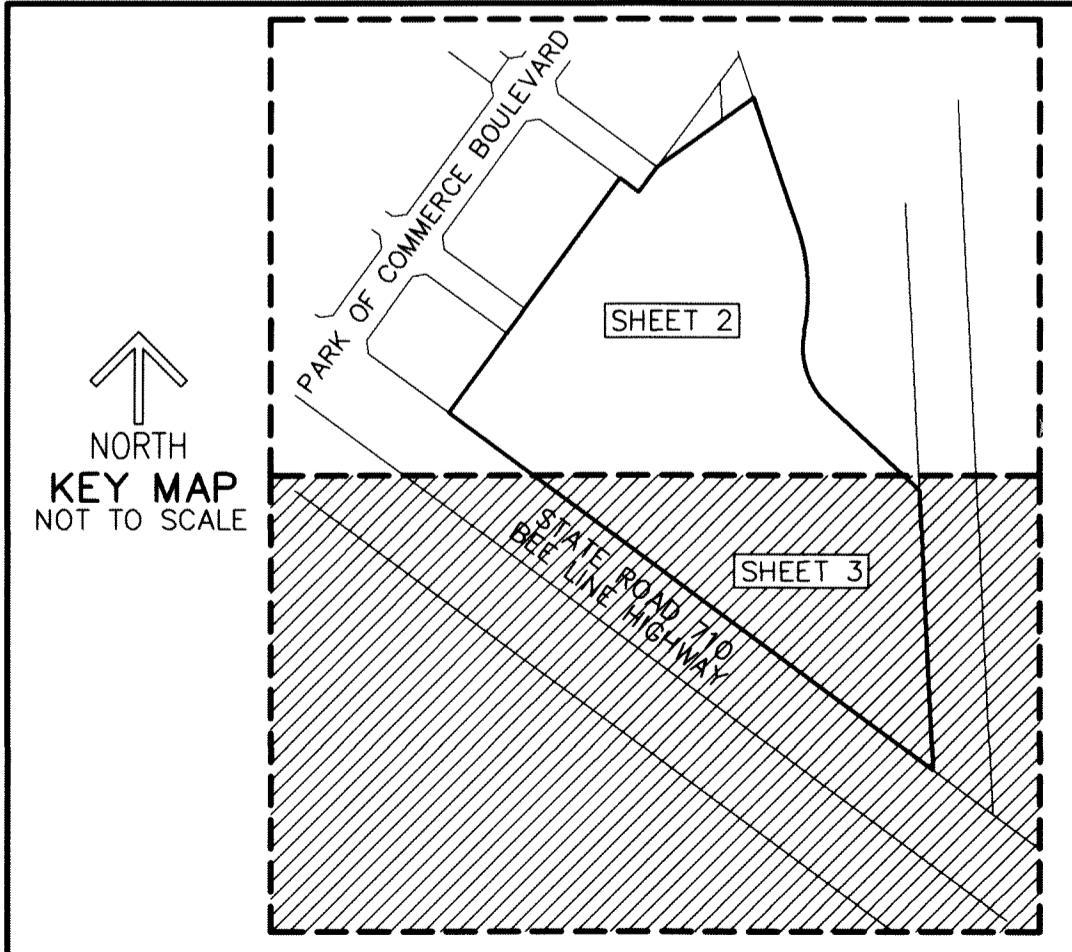
SHEET 3 OF 3

MATCH LINE SHEET 2



NOTES
COORDINATES, BEARINGS AND DISTANCES
 COORDINATES SHOWN ARE GRID
 DATUM = NAD 83 1990 ADJUSTMENT
 ZONE = FLORIDA EAST
 LINEAR UNIT = US SURVEY FEET
 COORDINATE SYSTEM 1983 STATE PLANE
 TRANSVERSE MERCATOR PROJECTION
 ALL DISTANCES ARE GROUND, UNLESS OTHERWISE NOTED
 SCALE FACTOR = 1.0000564
 GROUND DISTANCE X SCALE FACTOR = GRID DISTANCE
 ROTATION ANGLE FROM PLAT BEARINGS TO GRID BEARINGS
 IS COUNTERCLOCKWISE 00°00'06"

S02°48'45"E (PLAT BEARING)
 S02°48'51"E (GRID BEARING)
 EAST LINE THIS PLAT



- LEGEND / ABBREVIATIONS**
- CL - CENTERLINE
 - Δ - DELTA (CENTRAL ANGLE)
 - DE - DRAINAGE EASEMENT
 - E - EASTING (WHEN USED WITH COORDINATES)
 - FPL - FLORIDA POWER & LIGHT COMPANY
 - L - ARC LENGTH
 - LB - LICENSED BUSINESS
 - N - NORTHING (WHEN USED WITH COORDINATES)
 - NPBCID - NORTHERN PALM BEACH COUNTY IMPROVEMENT DISTRICT
 - O.R.B. - OFFICIAL RECORD BOOK
 - P.I.P.D. - PLANNED INDUSTRIAL PARK DEVELOPMENT
 - PC - POINT OF CURVATURE
 - PRC - POINT OF REVERSE CURVATURE
 - PT - POINT OF TANGENCY
 - R - RADIUS
 - UE - UTILITY EASEMENT
 - PRM - DENOTES PERMANENT REFERENCE MONUMENT SET 4" x 4" x 24" CONCRETE MONUMENT WITH ALUMINUM DISK STAMPED "C&W PRM LB3591" UNLESS OTHERWISE NOTED

SE CORNER OF SECTION 19
 TOWNSHIP 41 SOUTH, RANGE 41 EAST
 NO MONUMENT FOUND
 PALM BEACH COUNTY POSITION
 N 927679.2140
 E 893408.5020